



TONE WINNER



TY-30
User Manual

ISO9001 Certified Enterprise



TONE WINNER

Product packing list

Number	Item	Quantity
1	Manual	1 piece
2	Power cord	1 piece
3	Certificate	1 piece
4	Remote control	1 piece

Pollution control labels and its content descriptions

This symbol indicates the product can be recyclable. The number 10 indicates the period of environmental protection. As long as you follow the safety and precautions related to this product, it will not cause environmental pollution or impact on human property within 10 years from the date of manufacture.



Name and content of toxic or hazardous substances or elements in the product

Part Name	Hazardous substances or elements					
	Lead (Pb)	Mercury (Hg)	Cadmium (Cd)	Hexavalent chromium (Cr) ⁶⁺	Polybrominated (PBB)	Biphenyls polyphenyls (PBDE)
Chassis enclosure	○	○	○	○	○	○
Electrical parts	×	○	○	○	○	○
Plastic structural parts	○	○	○	○	○	○
Metal structural parts	○	○	○	×	○	○
Cables	○	○	○	○	○	○
Transformer	○	○	○	○	○	○

Marks:

“○” means the content of the hazardous toxic substance is lower than SJ/T11363-2006 standard required.

“×” means in a homogeneous material of the component, the content of the hazardous toxic substance is higher than SJ/T11363-2006 standard required.

Note: “×” as there are no substitutable substances under the existing technology

Thank you for choosing Tonewinner brand audio products. We will serve you with "High technology, High quality and High taste" enterprise philosophy, will serve you with exquisite craft, classical circuit, high technologies, first-class quality and first-class services. We will bring all customers with our stable, reliable, durable and pleasant technology achievements!

Contents:

- 1.Important protective measures for attention-----2-3
- 2.Features overview-----4
- 3.Rear panel-----5
- 4.Remote control-----6
- 5.How to use it-----7-8
- 6.Main Specification-----9
- 7.Problem shooting-----10

Important protective measures for attention

	WARNING ELECTRIC DANGER DO NOT OPEN		<ul style="list-style-type: none">■ To reduce risk of electric shock, do not remove the outer cover (or back panel).■ For maintenance, it should be carried out by qualified maintenance people.■ To avoid fire and electric shock hazards, do not get the unit wet or damp.■ Safety protection category: Class II
---	---	---	---

1. Read the protective measures: read all warning messages about protection and operation in the instructions carefully before using the equipment.
2. Follow instructions: please follow the instructions and do not violate the instructions.
3. Place the product on where manufacturer recommends: to protect equipments overturning, do not use force to push or suddenly stop when moving.
4. Keep away from water and moisture: do not place equipment near water such as bathtub, basin, sink, washing machine, etc. Do not use equipment at high temperatures high humidity environment, such as a damp basement.
5. Cleaning: Do not use liquid or mist cleaners, please use dry cloth to clean. Turn off the machine and power off before clean the equipment.
6. Power supply: use the power supply according to indication. Should have reasonable wirings, to avoid damage, do no step. Pay special attention to power plugs, receptacles and connection wirings.
7. Ventilation: the chassis of equipment is designed with venting holes. To ensure reliable performance, please avoid overheating, do not cover the equipment. Do not use the equipment on beds, sofas, carpets etc. Newspapers, tablecloths, curtains, and other objects may block venting holes. Do no put the equipment close to window curtains. If it is built-in installation, such as bookcase or rack, make sure enough venting. Keep a distance of 10cm (4") on left, right, top and rear sides. Equipment bracket or rear of top cover should have a distance of 10 cm (4 ") to rear panel or the wall, to keep venting space.
8. Heat - to keep products away from heat sources, such as heatsinks, stoves, objects that generate heat (including power amplifiers)
9. Prevent unknown objects or liquids - objects or liquids should be prevented from falling through the holes into the equipment, because it might contact current or live parts that might cause fire or electric shock. Do not place the equipment in rain or water splashing place, do not put into water containers, such as vases.
10. Please connect well all input/output wires before power on.
11. Thunder and lightning: unplug the power cable in thunder and lightning weather, it can effectively prevent lightning impulses to protect the equipment.
12. Protections:①unplug the power supply when you do not use the manual for long period. Plug. ②Good grounding can prevent the machine from being damaged.

13. Maintenance: do not open the equipment chassis to avoid electric shock.

Please send the machine to our local designated maintenance house if you meet below circumstances and need maintenance.

- a) Unknown parts or liquid enter the machine.
- b) The equipment was soaked.
- c) Abnormal machine operation.
- d) Machine falling or machine damage.

14. Battery: for environmental protection, do not discard the waste electricity optionally.

15. Disconnection device of main power supply: this machine use power plug and coupler as the disconnecting devices. Power plug and coupler should be easily operated.



16. This product is only suitable for safe use in altitude below 2000M.



17. This product is only suitable for use in tropical climates

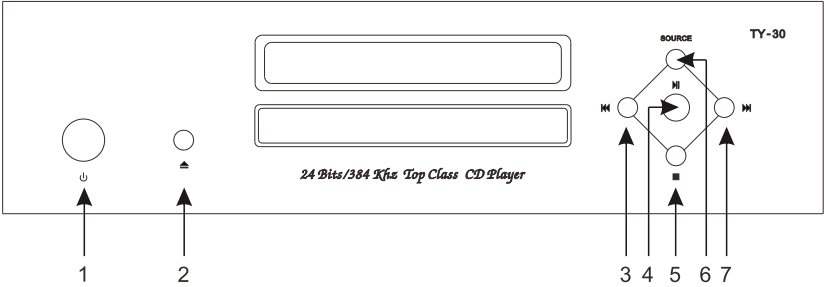
Breif Introduction:

TY-30 is a CD player designed by ToneWinner audio, for the input, it supports Optical, Coaxial and CD input sources and for output, it offers: 1 way Coaxial output, 1 way Optical, 2 way RCA analog outputs and 1 way balance output.

Features Overview:

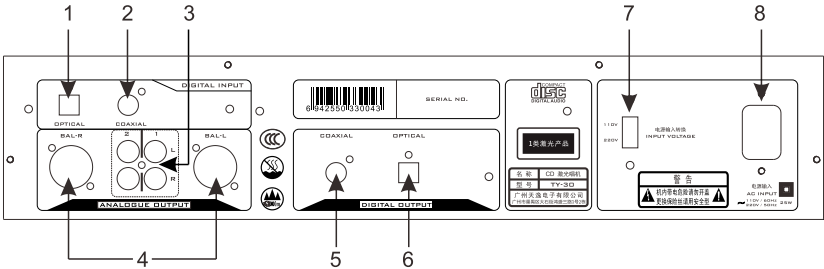
1. External audio source input, it applies a lot of classic chips: It applies AD1955 decoding chip, IV convert chip is OPA1642, and LPF low pass filter chip is OPA2134.
2. It applies balance transmission circuit with high common-mode rejectionratio & strong anti-interference.
3. It applies audiophile MOSFET as output differential line amplify, which is with small distortion & sweet fine sound quality.
4. It applies linear power supply which can avoid the disturbance to the analog audio hcaused by switch power supply.
5. It adds electromagnetic shielding cover to the mechanism and decoding board since they will cause interference to analog audio.
6. Applies high quality high power (50W) toroidal transformer high volume capacitors for the power supply of TY-30 which guarantees the performance of the CD player.
7. For signal coupling capacitors, it applies Elna audio exclusive capacitors, which makes TY-30 has flexible and soft sound in low frequencies, mellow and warm sound in mid frequencies and permeable & delicate sound in high frequencies.
8. It applies high quality solid CD deck bracket, & it add thick metal fixing plates and shake-proof base to the mid of the chassis & CD mechanism, thus TY-30 is as stable as a rock when playing music.

Front panel:



1. Power switch: Press it for power on & popup for power off.
2. Open/Close tray: Open or close the Disc tray.
3. Previous track: For selecting previous track.
4. Play/Pause: Playing / Playing pause.
5. Stop: Stop playing Disc.
6. Source select: It can play Optical Coaxial and CD sources.
7. Next track: Select next tack.

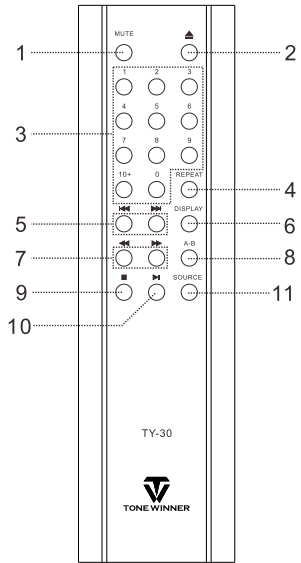
Rear panel:



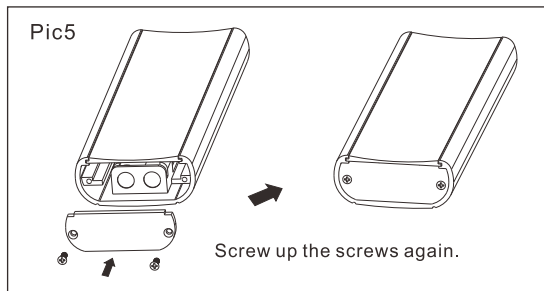
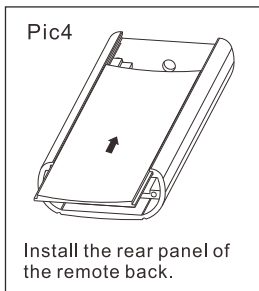
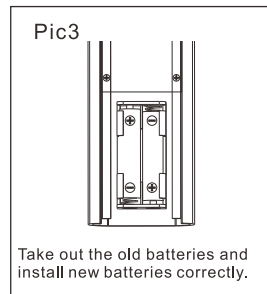
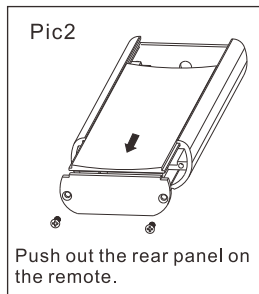
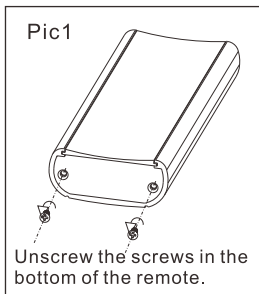
1. Optical input
2. Coaxial input
3. Analog unbalance output
4. Analog balance output
5. Digital Coaxial output
6. Digital Optical output
7. Input power switch
8. AC input(~110V/~220V)

Remote:

- 1.Mute: Pause CD playing and mute both Optical and Coaxial.
2. Open/Close tray: For control open and close of the DISC tray door.
- 3.Numbers for selecting the track
- 4.REPEAT: Single track repeat/All tracks repeat
5. Previous track/Next track
- 6.DISPLAY: It has 3 modes, displaying one track's playing time, displaying one track's time and 1displaying remaining playing time.
7. Fast forward fast rewind
8. A-B: Selected part repeat
9. Stop
10. Pause
- 11.SOURCE select: Optical, Coaxial and CD , in total 3 kinds of.



Remote battery replacement:



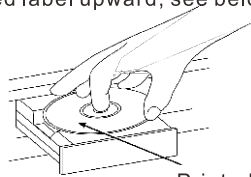
How to use your TY-30 CD player:

Power ON/OFF:

- For the first time use, please make sure the working voltage is set correctly as your country's voltage. If not, please turn the voltage switch and set it same as your country's voltage. Please make sure to disconnect the electricity of the CD player before you change the voltage set to avoid fuse burns out.
- If you don't want to use the CD player, please power it off & if you wouldn't use it for a long time, please take off the power plug.

Playing Disc

- Press "▲" on the front panel or remote to open the tray & the OSD will show OPEN.
- Put in the Disc with the side with printed label upward, see below diagram:



Printed side upward

- Press "▲" on the front panel or remote to close the tray & the OSD will show CLOSE and then LOADING. After it read the information of the Disc, the OSD will show PLAY & it will start to play the Disc.
- Press "▶▶" on the front panel or remote you can play the whole Disc & you can also use number keys on remote to select any track you want. You can also use "◀◀ ▶▶" on the front panel or remote to play previous track or next track, and use "◀◀ ▶▶" on remote to select a certain section you want to play.

Stop and Pause:

- Press "■" on front panel or remote when CD player is playing, it will stop playing & the OSD will show STOP.
- Press "▶▶" on front panel or remote when CD player is playing, it will pause playing & the OSD change the display from "01 03:26" to "PAUSE" and if you repress "▶▶" button, it will continue playing.

Repeat playing

- Press REPEAT button on remote for one time, CD player will go into single track replay & OSD will show **REP. ONE** . If you press REPEAT for the 2nd time, CD player will replay all the Disc and the OSD will show **REP. ALL** . If you press REPEAT for the 3rd time, it will cancel the repeat playing & OSD will show **REP. OFF** .
- For the section which you want to repeat playing, please press A-B button on remote for selecting the start point of the repeated section and the OSD will show **A Point** , and press it again for the stop point you want, the OSD will show **B Point** , in this way the selected section will be play repeatedly. Repress the A-B button for cancel section repeat playing & the OSD will show **AB OFF** .

Track selection

- Press number 0~10+ buttons on remote for selecting the track you want. When playing CD and HDCD Disc, if you want to play track # 5, press button # 5 on remote, press button # 0 for playing track # 0, press button # 10+ plus button # 5 for playing track # 15 . When P3 Disc, press button # 10+ twice plus press button # 5 for playing track #25.

Source selection

- TY-30 CD player supports 3 kinds of input sources: Optical, Coaxial, and CD. Press SOURCE on front panel or remote, the OSD will show **OPT** , play it twice, the OSD will show **CD** & play it 3 times, the OSD will show **COAX** , you can select the source you need.

Time display

- CD player will show the current playing time, press DISPLAY button on remote the OSD will show the remaining time of the playing tack, press twice of DISPLAY button, the OSD will show the whole playing time of the Disc, press 3 times of Display button, it will show the whole remaining time of the Disc.

Main specification :

1. Output level: $2V \pm 1.7\text{dB}$ (1KHZ)
2. Channel unbalance degree: $\leq 1\text{dB}$ (1KHZ)
3. Crosstalk: $\geq 104\text{ dB}$ (1KHZ)
4. Frequency response: 20Hz~20KHz(+0/-1dB)
5. S/N: ≥ 108 (A weighted)
6. THD: $\leq 0.002\%$ (1KHZ)
7. Voltage: ~110V(60Hz)/220V(50Hz)
8. Unit size: 444x107x363mm
9. NW.: 8.3KGS

Problem Shooting List:

Before contact repair person, please use below chart for checking the problem and its solution:

Problem	Reason	Solution
No display on OSD	Power cord is loose	Plug in tightly the power cord.
	Didn't press the power button	Press the power button.
	Fuse on rear panel burned out	Replace with the same specification fuse.
No sound	Audio connecting cable is loose	Reconnected the cable.
	The connected device is not set correctly.	Reset the audio input channel of the connected device.
Output sound is distorted or on and off	Audio cable is loose	Reconnect the cable firmly.
	The Disc is dirty	Clean the Disc.
OSD shows UN DISC	The DISC format is unreadable	Put in the readable Disc.
OSD shows NO DISC	No Disc	Put in a Disc
	Disc is upside down	Keep the printed label side upward.
	The Disc is dirty	Clean the Disc.
	The Disc is damaged	Change a good Disc.
No response when pressing remote	The remote is not pointed to the infrared receiving window of CD player	Point the remote to the infrared receiving window of CD player.
	The distance from remote to CD player is too far away	Suggest to distance between remote and CD player is within 7 meters.
	Running out of batteries	Change with new batteries.
No response when press buttons on front panel	Power supply is not stable or too much static electricity	Reboot.

NOTES



Scan QR code

Guangzhou Tonewinner Electronics Co., Ltd

Tel: 86-20-34797660/34796146

Web: <http://www.tonewinner.com>

Add: No.1, Hongsheng 3

Road, Dashi, Panyu, Guangzhou, 511430, China